

# QUALITY COLORS.



## Case Study

Alp, Tokyo, Japan



Color for Life.

COLORED CONCRETE WORKS®

An initiative of LANXESS

QUALITY WORKS.

**LANXESS**  
Energizing Chemistry



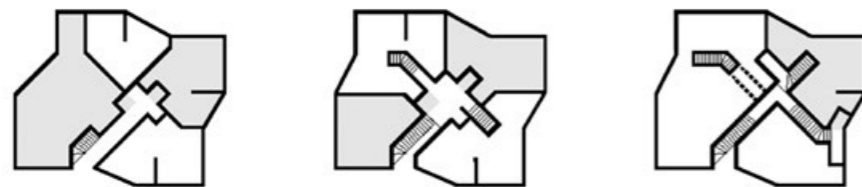


**A street becomes an inviting plaza again.**

The word “environment” describes the relationship between an object and its surroundings, and it is the overarching concept behind Alp, an apartment building designed by Akihisa Hirata in Akabane, Tokyo. Located in the heart of the city, this area nevertheless is influenced by the natural hills surrounding it. It has the look of a place where you could expect at any time to encounter archaeologists on a dig. Akihisa Hirata abstracted this special topography for his design, with the goal of creating a new kind of harmony between the building and its urban environment.

To connect the building more closely to the original landscape, the concrete was colored to give it the appearance of charcoal. Alp not only blends in with the various roof styles of the surrounding buildings; the walls and roofs of the individual apartments simultaneously convey to observers and residents a sense of the building’s immediate ties to the forces of nature.

■ Balanced proportions, clear and simple lines, and the characteristic, charcoal-like coloring modeled on the natural surroundings combine the three-story apartment house Alp in Akabane, Tokyo, with its urban environment and the natural topography.



■ Apartments with nooks and crannies: From the roof down to the ground floor, the floor plans of the three residential floors are reminiscent of an Alpine mountain range.





## A DISTINCT WORLD IN THE MIDST OF THE CITY.

### Valleys of light.

In urban Akabane, buildings stand close together, supporting roofs of varying styles and sizes. A large cubic object would not have fit in here, and so a building was designed with fractal structures, and both concave and convex surfaces. With their simple geometric shapes, the roofs, walls and stairways reflect the building's topographical context. Inside, the hallways form natural valleys, letting light and air into the lower floors and garden areas. Alp in this way expresses a deep understanding of the relationship between the natural and the artificial.

■ The color establishes a geographical context.



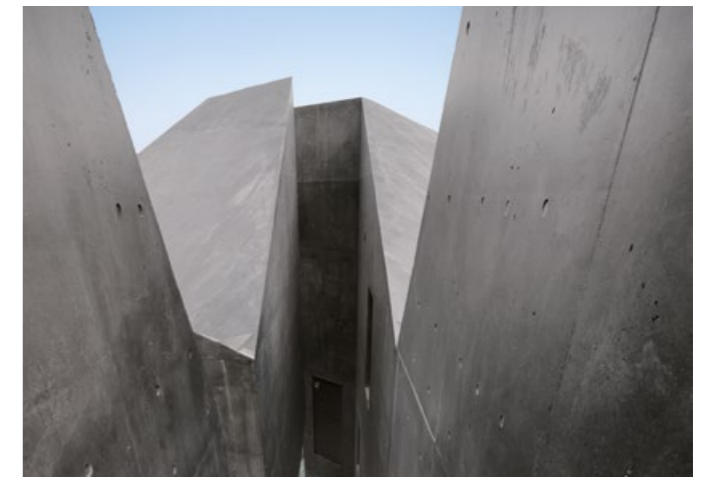
■ The roof looks as if it were creased and folded by the forces of nature.



**“THIS CHARCOAL-COLORED BUILDING IS DIVIDED JUST LIKE THE NATURAL LANDSCAPE, LENDING THE CONCRETE A NEW FORM OF EXPRESSION AS A BUILDING MATERIAL.”**

Akihisa Hirata

Akihisa Hirata, born in Osaka in 1971, received his degree from the Architecture Department of the Engineering Faculty at Kyoto University in 1994, and earned his master's degree from the Graduate School of Engineering in 1997. The recipient of numerous awards, Hirata established his own architecture firm in 2005, and is a national and international guest lecturer. His most significant works apart from "Alp" (2010) include "Masuya" (2006), "Bloomberg Pavilion" (2011) and "Kotoriku" (2014).



■ Residents move through hallways flooded with light and air.



## A BODY OF COLOR IN A GEOGRAPHICAL CONTEXT.

### A new relationship between architecture and the environment.

“Colored concrete is not simply concrete with colored paint on top,” says Akihisa Hirata. Merely painting the building therefore was not an option for his Alp project. He decided in favor of integral coloration with **Bayferrox®** color pigments. This process retains the characteristic surface structure and appearance of the concrete, which was Hirata’s objective. Furthermore, different color nuances and shades can be created as desired by varying the amount of pigment added, in this case **Bayferrox® 4330/3**. A color tone was created specifically for the Alp project that perfectly matches the surroundings and powerfully expresses the potential of the build-

ing site. And it will continue to do so for many years, because color pigments are exceptionally lightfast, as well as heat and weather resistant. And what will please current and future residents of the Alp apartments: In addition to all their other practical and aesthetic advantages, **Bayferrox®** color pigments are also safe and sustainable.

■ An expression of the relationship between the natural and the artificial.



■ Concave and convex surfaces turn one roof into many.



## PROJECT DATA

### Location

Akabane, Tokyo, Japan

### Architect

Akihisa Hirata

### Construction Company

PRISMIC Corporation

### Project Partners

Miura Koumuten Co., Ltd.

### Construction period

July 2009 – March 2010

### Amount of concrete

424.9 m<sup>3</sup>

### Amount of pigment

ca. 9,000 kg

### Form supplied

Powder

### Supplier

Ozeki Co., Ltd.

### Pigments



Bayferrox® 4330/3

■ Clear lines for a new kind of harmony.



## FOR ADDITIONAL INFORMATION, CONTACT THE LANXESS COUNTRY REPRESENTATIVE.

### Germany

LANXESS Deutschland GmbH  
Business Unit Inorganic Pigments  
Rheinuferstraße 7–9  
47829 Krefeld  
GERMANY  
Tel.: +49 221 8885 3974  
Fax: +49 2151 88 4133

### USA

LANXESS Corporation  
Business Unit Inorganic Pigments  
111 RIDC Park West Drive  
Pittsburgh, PA 15275-1112  
USA  
Tel.: +1 412 809 1000  
Fax: +1 412 809 1059

### Singapore

LANXESS Pte. Ltd.  
Business Unit Inorganic Pigments  
3A International Business Park  
#07-10/18 ICON@IBP Tower B  
SINGAPORE 609935  
Tel.: +65 6725 5828  
Fax: +65 6725 4828

### Australia

LANXESS Pty. Ltd.  
Business Unit Inorganic Pigments  
Unit 1/35 Carter Street  
Lidcombe, NSW 2141  
AUSTRALIA  
Tel.: +61 28748 3910  
Fax: +61 28748 3999

### Japan

LANXESS K.K.  
Business Unit Inorganic Pigments  
Marunouchi Kitaguchi Building 23F  
1-6-5, Marunouchi, Chiyoda-ku  
Tokyo 100-8215  
JAPAN  
Tel.: +81 3 5293 8017  
Fax: +81 3 5219 9776

### Great Britain

LANXESS Ltd.  
Colour Works  
Lichfield Road  
Branston  
Burton-on-Trent  
Staffordshire, DE14 3WH  
UNITED KINGDOM  
Tel.: +44 1283 714200  
Fax: +44 1283 714201

### Brazil

LANXESS Indústria de Produtos  
Químicos e Plásticos Ltda.  
Av. Maria Coelho de Aguiar, 215 Bloco  
B - 2º Andar  
05804-902 São Paulo  
BRAZIL  
Tel.: +55 11 3741 2615  
Fax: +55 11 3741 3933

### Italy

LANXESS S.r.l.  
Segreen Business Park, Palazzo Y  
Via San Bovio n.1/3  
20090 - Milano San Felice - Segrate  
ITALY  
Tel.: +39 0230722644  
Fax: +39 0230724298

### South Korea

LANXESS Korea Ltd.  
9F, Samsung Boramae Omni Tower  
23, Boramae-ro 5-gil  
Dongjak-gu, Seoul  
07071, Korea  
REPUBLIC OF KOREA  
Tel.: +82 2 6715 5100  
Fax: +82 2 847 3295

### Central and Eastern Europe

LANXESS Central Eastern  
Europe s.r.o  
EUROVEA  
Central  
2 Pribinova 6  
811 09 Bratislava  
Slovak Republic  
Tel.: +421 2 3215 1626  
Fax: +421 2 3215 1699

### Spain

Europigments, S.L.  
Business Unit Inorganic Pigments  
Arquitectura, 27  
Poligono Industrial Els Garrofers  
08340 Vilassar de Mar  
SPAIN  
Tel.: +34 937 540 770  
Fax: +34 937 540 784

### China

LANXESS Specialty Chemicals  
Co., Ltd.  
No. 458 Haijin Road  
Jinshanwei Town  
Shanghai, 200540  
R.P. CHINA  
Tel.: +86 21 5284 7860  
Fax: +86 21 6250 0769

### India

LANXESS House  
Plot no's. A162-164  
Road No.27, MIDC  
Wagle Estate  
Thane (West) - 400604  
Maharashtra, INDIA  
Tel.: +91 22 25871000  
Fax: +91 22 25871287

### France

LANXESS S.A.S.  
Inorganic Pigments  
Le Doublon A  
11, avenue Dubonnet  
92407 Courbevoie Cédex  
FRANCE  
Tel.: +33 1 80 46 30 00  
Fax: +33 1 80 46 30 45

**LANXESS**  
Energizing Chemistry

### Health and safety information

Appropriate documentation was compiled with information on the health and safety measures that have to be observed in handling the LANXESS products mentioned in this brochure. For materials mentioned here that are not LANXESS products, the operational hygiene and other safety measures recommended by the respective manufacturers must be observed. Before working with these products, you must read and familiarise yourself with the available information on their dangers, proper use and handling. This point is of decisive importance. Information is available in various forms: such as safety data sheets, product information and product labels. Please contact your LANXESS representative in Germany or the Department of Regulatory Affairs and Product Safety of LANXESS Deutschland. For business in the USA, please contact the LANXESS Product Safety and Regulatory Affairs Department in Pittsburgh, Pennsylvania.

### Information on Regulatory Compliance

For some end use purposes of the products found in this brochure, the applicable regulations must be observed, including those of the FDA, BfR, NSF, USDA and CPSC. If you have any questions regarding the approval status of these products, please contact your representative at LANXESS Deutschland GmbH or the Department of Regulatory Affairs and Product Safety of LANXESS Deutschland GmbH or, for business in the USA, your representative at LANXESS Corporation, the LANXESS Regulatory Affairs Manager in Pittsburgh, Pennsylvania. How and for which purposes you utilise our products, our technical support and our information (oral, written or through product assessments) is beyond our control. The same applies for suggested formulations and recommendations. Therefore it is indispensable that you check our products, our technical support and our information for their suitability for the intended processes and purposes. The application-specific analysis must encompass at least suitability tests in regard to technical as well as health, safety and environmental aspects. Such testing has not necessarily been done by us. Unless agreed to otherwise in writing, all products are sold exclusively in accordance with our general terms and conditions for sale and delivery. Information and technical support are provided without warranty (we reserve the right to make changes at any time). It is expressly agreed that you release us from any possible liability resulting from the use of our products, technical support and information due to fault, contract or other reasons and that you assume this liability yourself. Any statements and recommendations not contained in this brochure are not authorised and are not binding for us. None of the information in this brochure is to be interpreted as a recommendation to use the products in any way that violates commercial proprietary rights such as patents in regard to any materials or their use. Furthermore, neither explicitly nor implicitly is any licence granted under commercial proprietary rights such as patents.

Bayferrox® is a registered trademark of Bayer AG, Leverkusen, Germany.  
Colortherm® is a registered trademark of the LANXESS Group.

Issue 1/2017

LANXESS Deutschland GmbH  
Business Unit  
Inorganic Pigments  
Rheinuferstraße 7–9  
47829 Krefeld  
GERMANY  
E-Mail: coloredconcreteworks  
@lanxess.com  
www.lanxess.com  
www.bayferrox.com  
www.colored-concrete-works.com

Visit our Internet site:  
[www.colored-concrete-works.com](http://www.colored-concrete-works.com)

